

FISZ EMMADE 2019

1xGrandMa 2 Light
13xMAC Quantum Profile
14xRobe Robin 600LedWash m3
5xClayPaky B-eye K20
2xAtomic 3000
8xChauvet Freedom Stick (istnieje możliwość przywiezienia)
4xBlinders
2xHAZER+wiatraki(maszyna dobrej jakości)

Wszystkie urządzenia muszą być w 100% sprawne !!!!

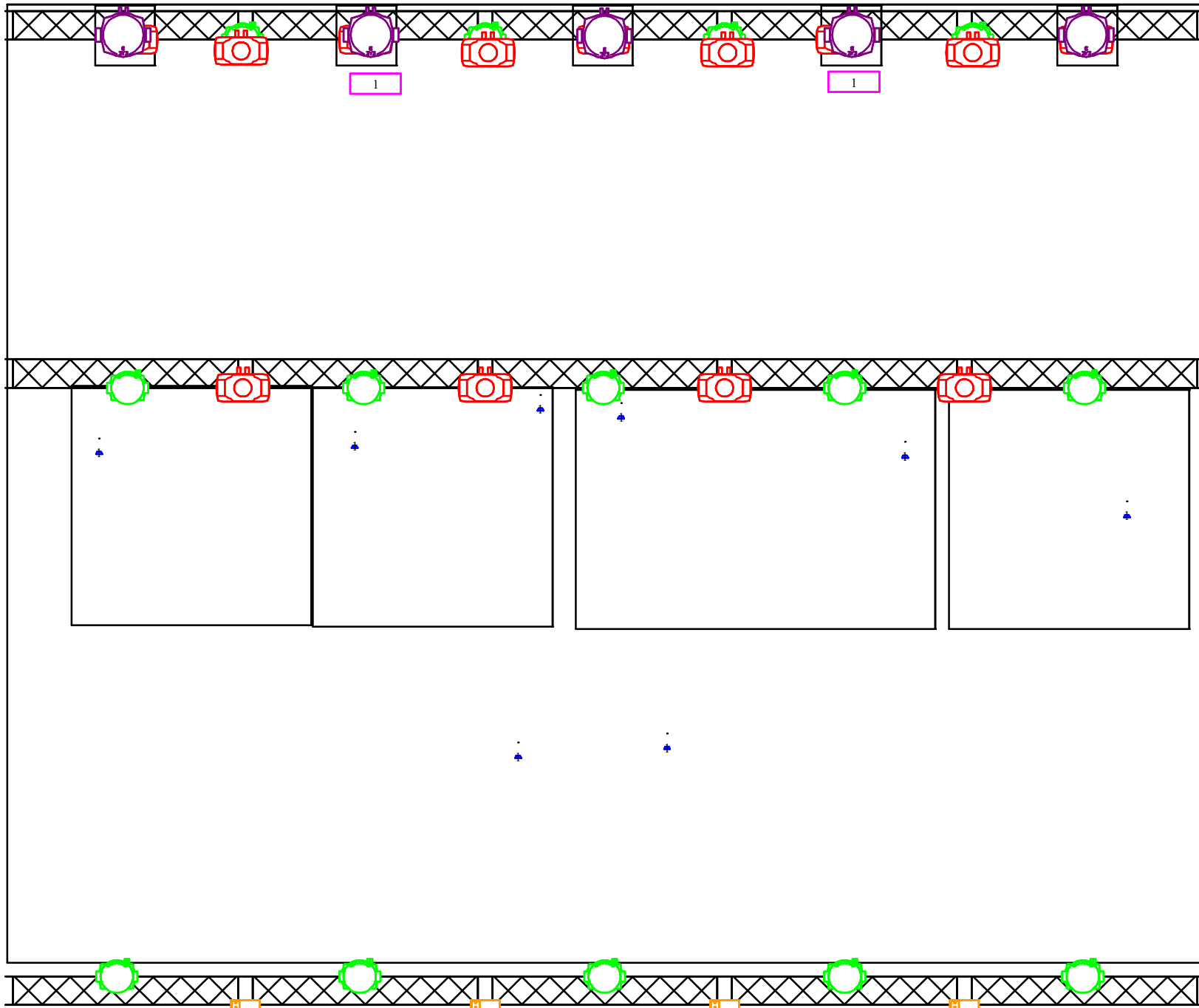
Jakiegokolwiek zmiany **MUSZĄ** być konsultowane z realizatorem minimum 7 dni przed koncertem.

Scena stabilna, atestowana.

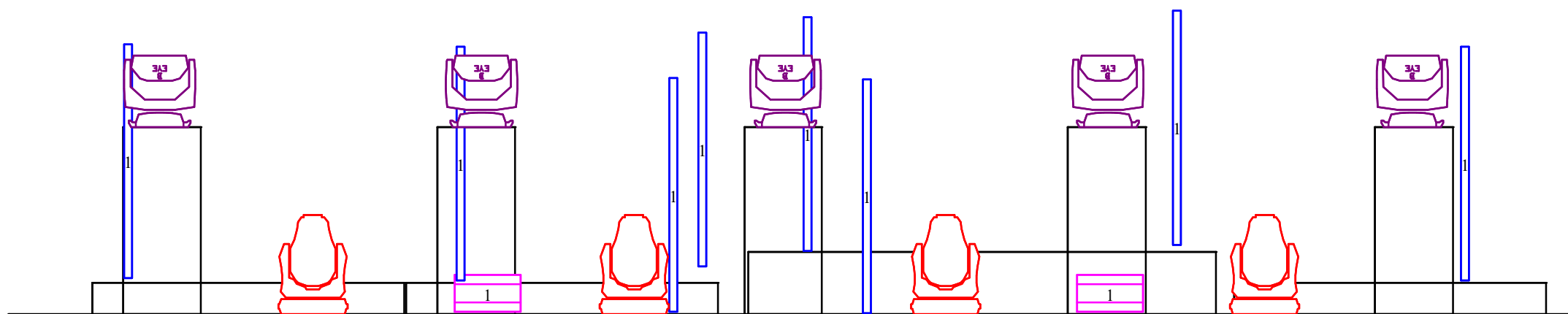
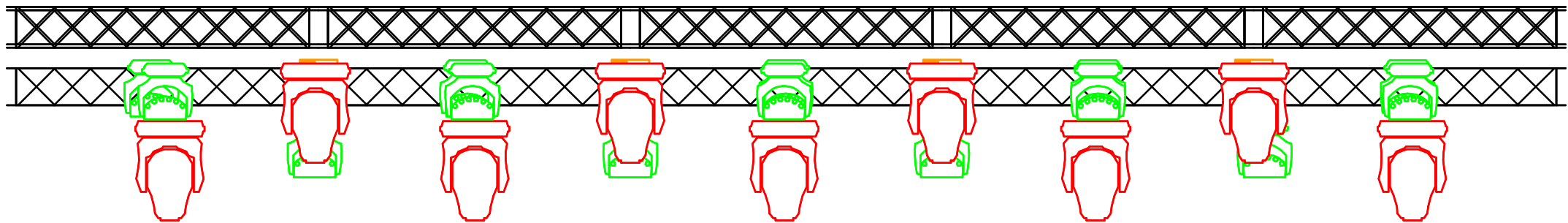
Tył oraz boki sceny osłonięte czarnym materiałem, tył sceny wolny od banerów reklamowych.

Stanowisko realizatora ustawione na podwyższeniu centralnie do osi sceny.

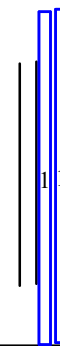
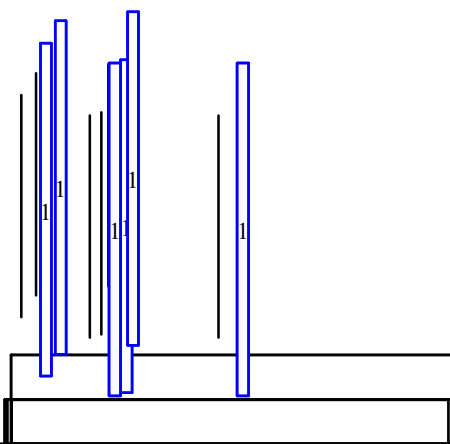
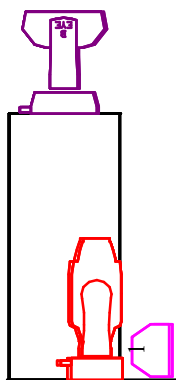
Realizator: Patryk Kośnik tel.663-638-689
mail:Karpik2828@gmail.com



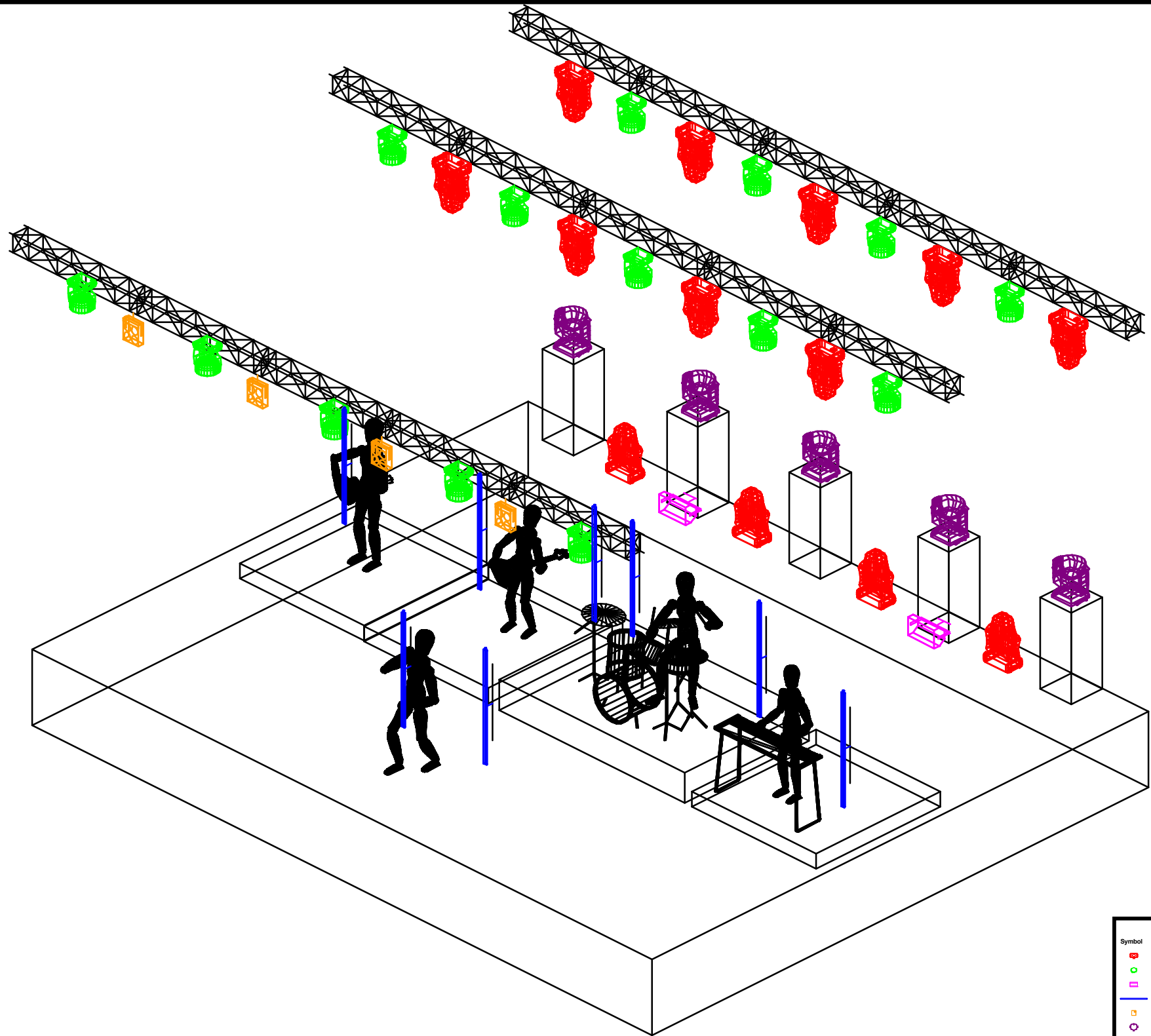
Symbol	Name	Count
	MAC Quantum Profile	13
	Robit LedWash 600 m3	14
	Atomic 3000	2
	Chauvet Freedom Stick	8
	Molefay Four Light	4
	Alada K20 B-EYE	5



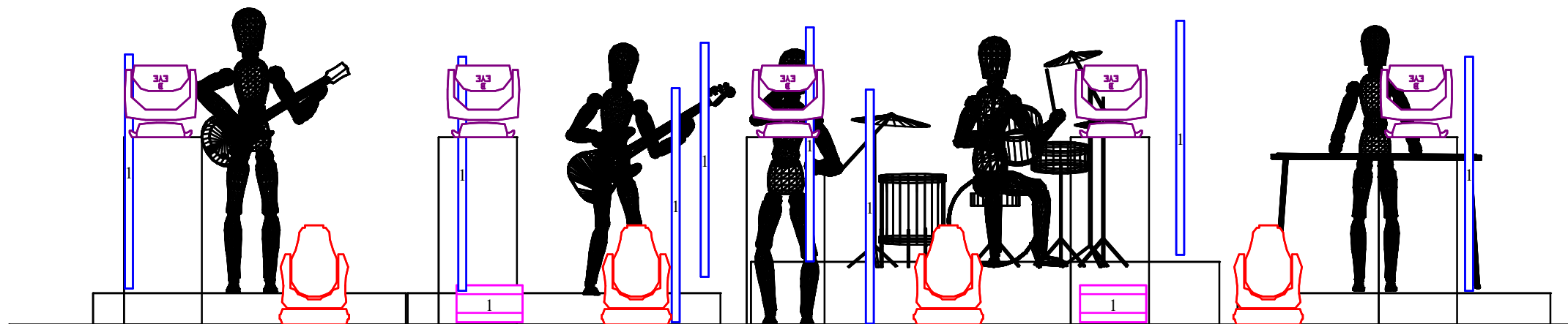
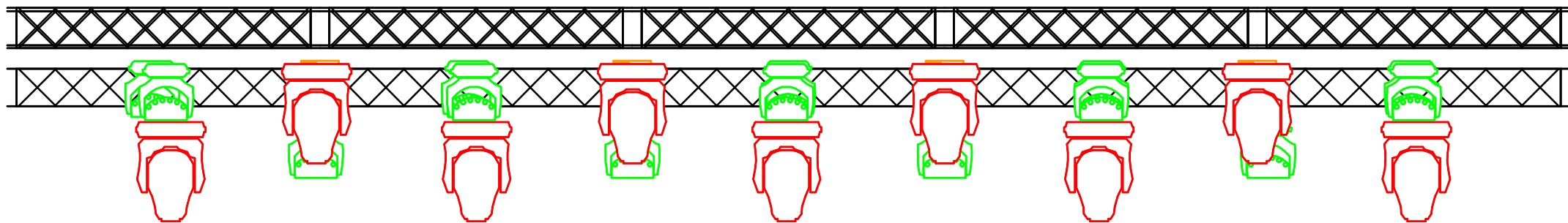
Symbol	Name	Count
	MAC Quantum Profile	13
	Robit LedWash 600 m3	14
	Atomic 3000	2
	Chauvet Freedom Stick	8
	Molefay Four Light	4
	Ateda K20 B-EYE	5



Symbol	Name	Count
	MAC Quantum Profile	13
	Robit LedWash 600 m3	14
	Atomic 3000	2
	Chauvet Freedom Stick	8
	Molefay Four Light	4
	Aleda K20 B-EYE	5



Symbol	Name	Count
MAC Quantum Profile	MAC Quantum Profile	13
Robit LedWash 600 m3	Robit LedWash 600 m3	14
Atomic 3000	Atomic 3000	2
Chauvet Freedom Stick	Chauvet Freedom Stick	8
Molefay Four Light	Molefay Four Light	4
Aleda K20 B-EYE	Aleda K20 B-EYE	5



Symbol	Name	Count
	MAC Quantum Profile	13
	Robit LedWash 600 m3	14
	Atomic 3000	2
	Chauvet Freedom Stick	8
	Molefay Four Light	4
	Aleda K20 B-EYE	5