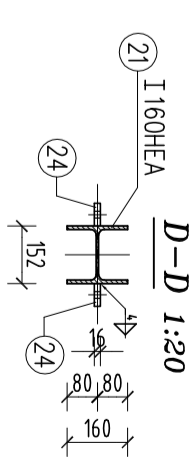
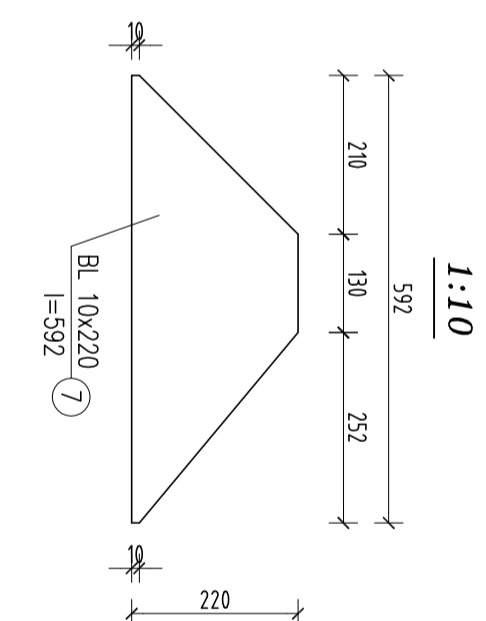
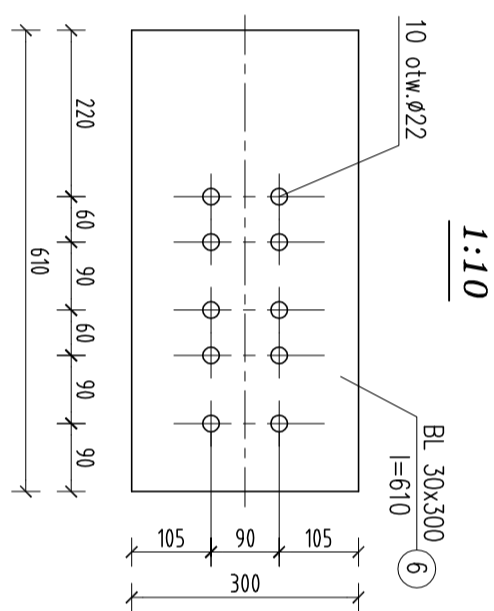
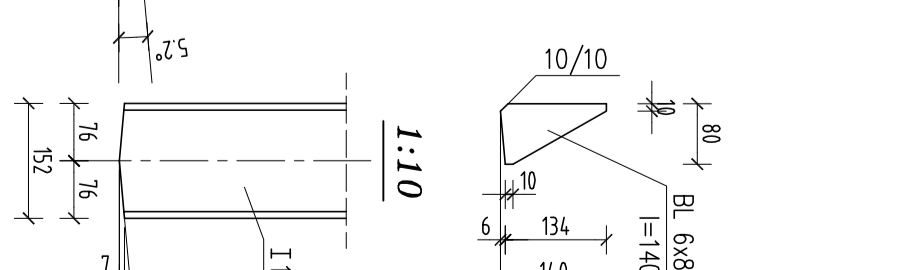
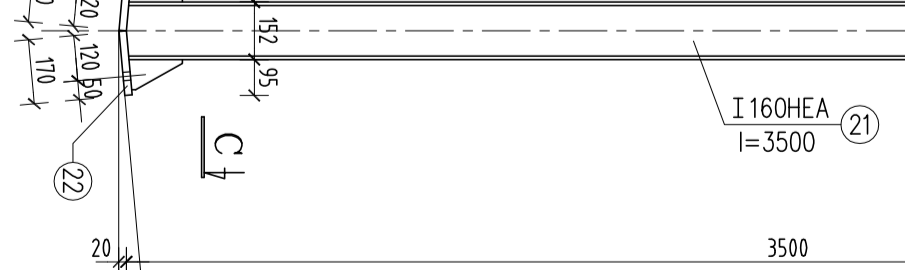
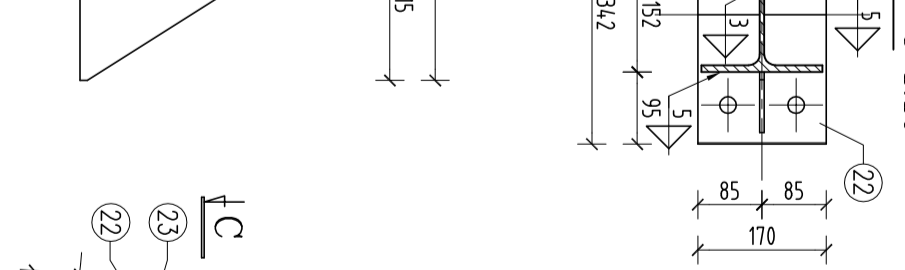
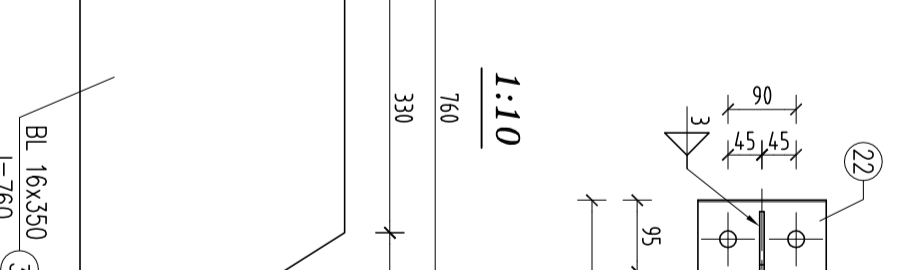
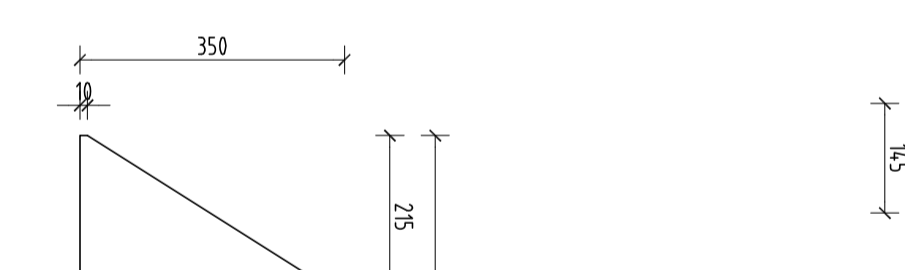
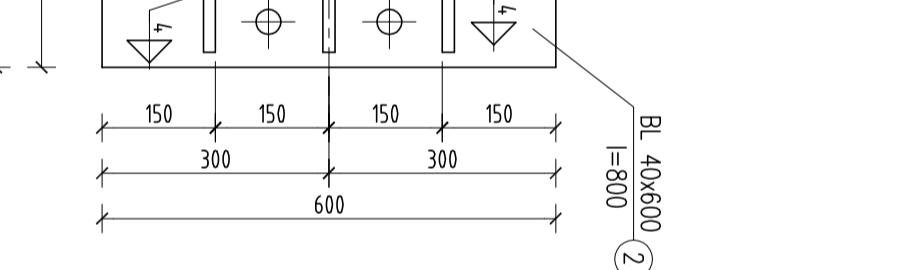
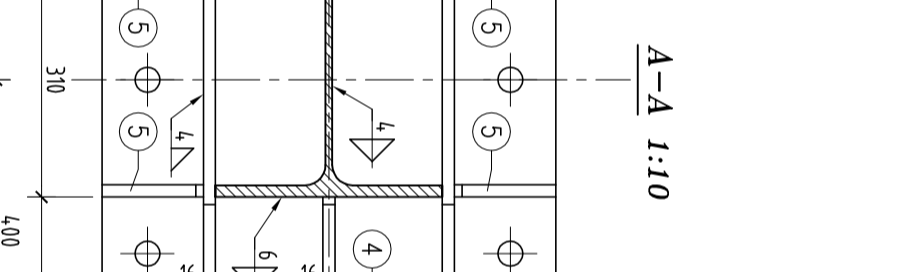
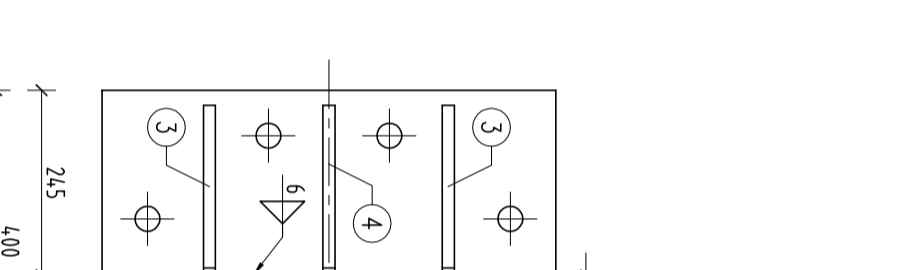
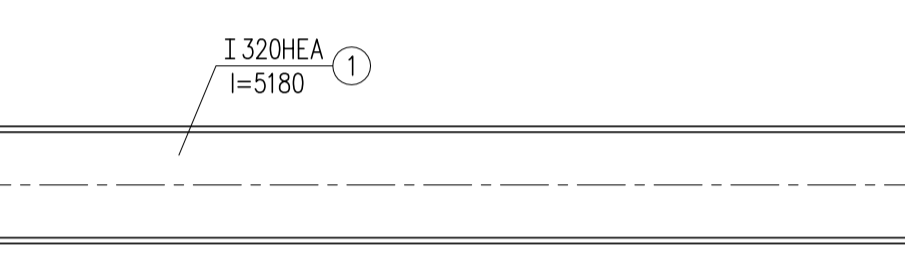
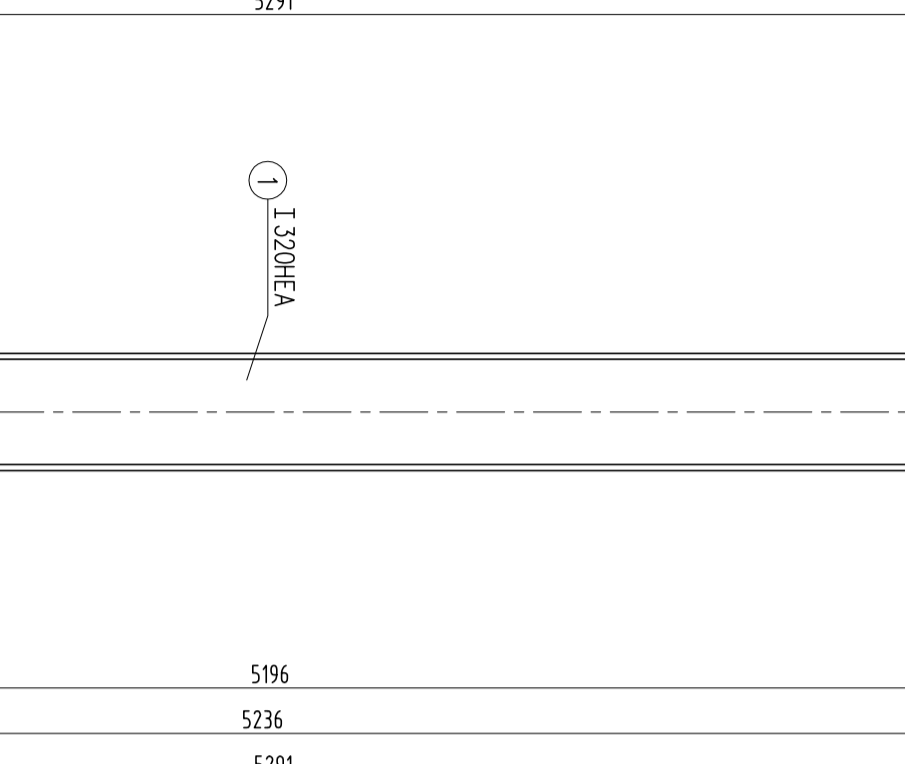
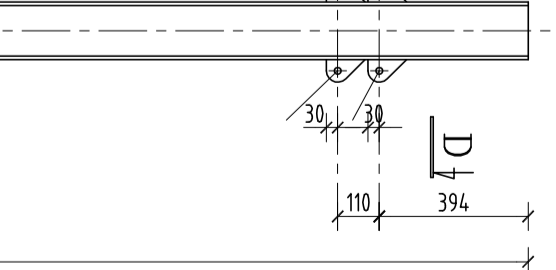
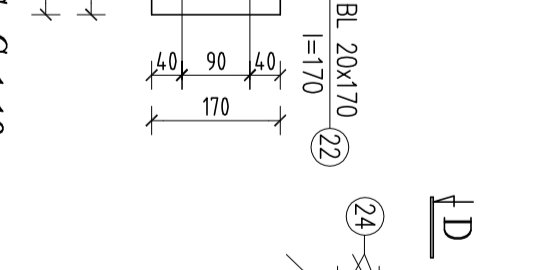
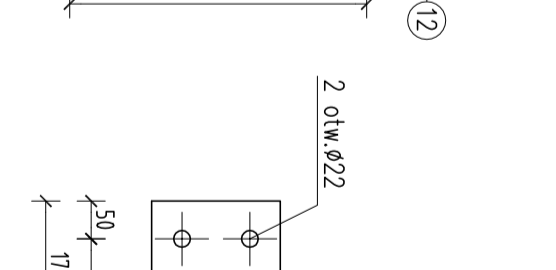
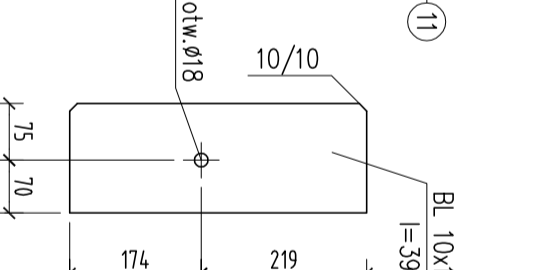
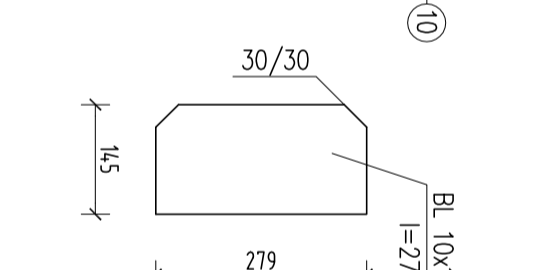
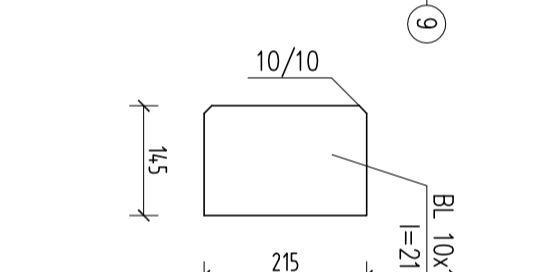
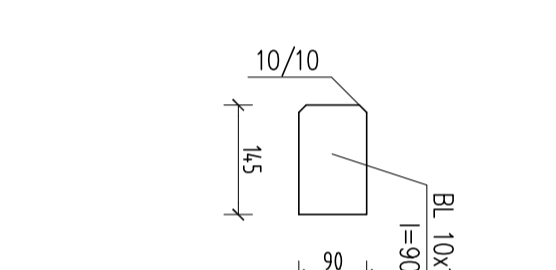
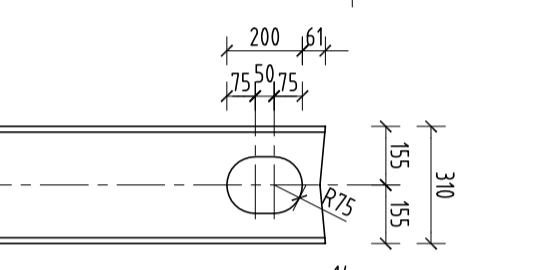
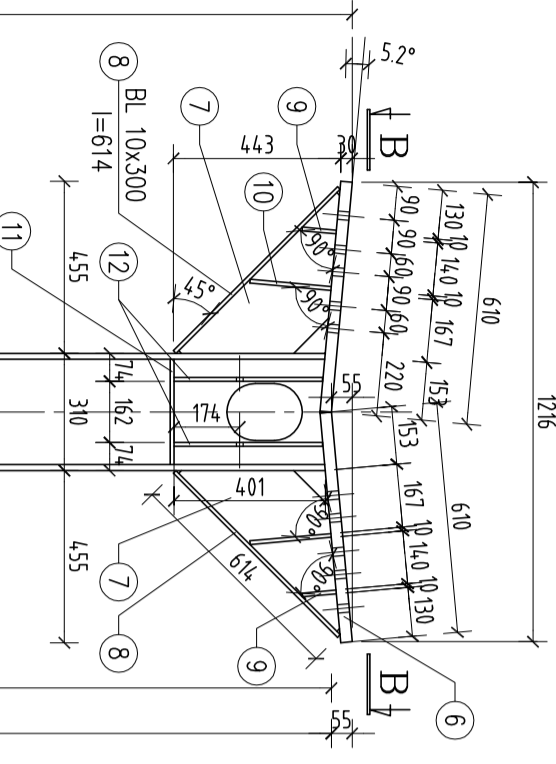
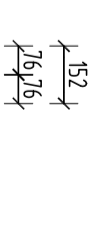


2.2.1. Stup
skala 1:20



2.2.2. Stup
skala 1:20



Stal St.35

Revizja:					
Niniejszy projekt jest chroniony PRAWEM AUTORSKIM i nie może być bez pisemnej zgody kopiowany, powielany ani udostępniany stronie trzecim					
BIURO KONSTRUKCYJNE PUZYREWSKI					
80-812 Gdansk, ul. Dokerów 15					
tel./fax: 0-58 322-02-85					
<table border="0"> <tr> <td>Tytuł projektu:</td> <td>Budynek Dworca Autobusowego</td> </tr> <tr> <td>Projektant:</td> <td>Chełmno, ul. Dworcowa 1</td> </tr> </table>		Tytuł projektu:	Budynek Dworca Autobusowego	Projektant:	Chełmno, ul. Dworcowa 1
Tytuł projektu:	Budynek Dworca Autobusowego				
Projektant:	Chełmno, ul. Dworcowa 1				
<table border="0"> <tr> <td>Tytuł rysunku:</td> <td>POZ.2.2.1., 2.2.2. SŁUPY</td> </tr> </table>		Tytuł rysunku:	POZ.2.2.1., 2.2.2. SŁUPY		
Tytuł rysunku:	POZ.2.2.1., 2.2.2. SŁUPY				
Projektował:	mgr inż. P. Puzyrewski Upr. 3911/Gd/89				
Opracował:	mgr inż. T. Stawicki Upr. POM/0166/POMK/05				
Sprawdził:	mgr inż. J. Tosiński Upr. 4682/Gd/90				
Faza:	PROJEKT WYKONAWCZY Branża: KONSTRUKCJA				
Data:	lipiec 2008				

